

Knock 'em Dead Dinner Theatre

2008 - 2009 SEASON



CELEBRATING OUR
24TH SEASON

Five great shows!

Five great dinners!

More info and tickets at www.kedproductions.org

RAGTIME

We are proud to bring this epic new musical by the award-winning team of Stephen Flaherty and Lynn Ahrens to our stage. Ragtime intertwines three stories that poignantly illustrate history's timeless contradictions of wealth and poverty; freedom and prejudice; hope and despair; love and hate. The musical score is just as diverse as the Melting Pot of America which it seeks to recreate. It draws upon the musical styles of the day - the haunting sounds of traditional Jewish folk music to accompany the yearning lyrics of the immigrants; the outrageousness of Vaudeville to capture the spectacle of Evelyn Nesbit & Houdini; and jazz to invoke the spirit of Harlem.



AN OLD FASHIONED CHRISTMAS

KED's Christmas production has become a holiday classic. *An Old Fashioned Christmas* will once again bring you many of the KED performers in a variety of skits, readings and the holiday songs everyone loves to hear. With its traditional message of Love and Peace, it's sure to give us a "kick-start" on the holiday season!



MUCH ADO ABOUT NOTHING

“When I said I would die a bachelor, I did not think I should live till I were married.”

It’s so easy to fall in love, unless you’re Beatrice and Benedick, who’d rather trade witty insults than wedding bands. It’s so easy, unless you’re Hero and Claudio, heading for a storybook marriage, but hitting a nasty snag at the altar. One of the most boisterous comedies ever written, *Much Ado About Nothing* is overflowing with scheming relatives, salacious scandal, costume parties, and a bumbling local constabulary. *Much Ado* is a celebration of light-hearted invention.



ONCE ON THIS ISLAND

Once On This Island tells the story of Ti-Moune, the poor peasant girl sent on a journey by the Gods to test the strength of love against the power of death. The age-old story of star-crossed lovers gets a shot of Calypso rhythm and Caribbean heat in this bittersweet musical romance. *Once on This Island* uses soaring melodies and sultry dances to tell the story of an orphan living among the island’s poor peasants and praying for a future that seems impossible. But when divine intervention puts Ti Moune face to face with

her true love, a young aristocrat, she begins a journey to find herself and reclaim her heart. A musical for the innocence in us all.

THE IMPORTANCE OF BEING EARNEST

“Earnest” follows the romantic misadventures of a pair of English cadts and the strong-willed women whose hearts they hope to win. In their pursuit of love, Jack and Algy confront the merciless strictures of tea time and the pitfalls of sincerity. No other playwright has dared to pose the question: can a man marry into good society when he was born in a handbag? Does it matter whether it had handles or not? These and other mysteries will be resolved in KED’s production of Oscar Wilde’s delicious satirical confection.



Knock 'em Dead Dinner Theatre's 2008 - 2009 Season

Provides you with:

* Five exciting productions including dinner for only \$170. That is a \$25 savings over the regular ticket price! (Must purchase by October 1, 2008, to ensure this price.)

* Season ticket holders get preferential seating on the show date of their choice.

* Secure ordering using your Name & Password on-line. Print off your ticket. No need for calling the theater.

* Check in at the theater box-office by 6:30 and we will make your table reservation at that time.

* Show only Season Tickets are available for only \$70 and are good for any Thursday night! (On Friday & Saturday as space is available)

Mail in the attached form or order online at www.kedproductions.org.

PRODUCTIONS

RAGTIME

Oct. 3 - Nov. 8, 2008

AN OLD FASHIONED CHRISTMAS

Dec. 5 - 20, 2008

MUCH ADO ABOUT NOTHING

Jan. 23 - Feb. 21, 2009

ONCE ON THIS ISLAND

Mar. 20 - April 18, 2009

THE IMPORTANCE OF BEING EARNEST

May 15 - June 13, 2009



Order Form

Season Ticket	Number	Price prior to 10/1/08	Price as of 10/1/08	Total
Dinner/Show		\$170	\$180	\$
Show only		\$70	\$75	\$
Memberships				
Single		\$25	\$25	\$
Couple		\$40	\$40	\$
Family		\$60	\$60	\$
Donations	<i>Fully tax-deductible. Thank-you!</i>			\$
TOTAL				\$

Name _____

Address _____

City/State _____

Zip Code _____

Phone number _____

Email _____

Credit Card Information

Circle type of card: **VISA / MASTERCARD**

Card # _____

Expiration Date (mm/yy) _____

CCV Code (last 3 digits in signature box) _____

Signature _____

Make checks payable to:

Knock 'em Dead Productions, Inc.

Send order form and payment to:

KED, 1843 Roanoke Dr., Boise, ID 83712



Mailing address:

Knock 'em Dead Productions, Inc.
1843 East Roanoke
Boise, ID 83712

HOW CAN YOU SUPPORT KED? HERE'S HOW!

Memberships

Memberships run from September through August each year. Your \$25 membership dues (\$40 per couple or \$60 for a family) entitle you to a number of benefits including preferred seating for you and your family. As a member, you are an official voter for the acting/production awards. You are also invited to the annual meeting (the summer picnic) where the awards will be presented. However, the greatest advantage is your invitation to our Champagne Gala on Oct. 2nd, featuring hors d'oeuvres and a premiere showing of our opening production, **Ragtime**. Don't miss this opportunity to be part of the KED family.

Contributor List

Knock 'em Dead is not supported through grants. KED is working to give you the best entertainment value for your dollar. But we need your help! We will continue to strive to improve the services that we offer. To help make your evening's entertainment the best it can be, we are depending on the financial backing of our patrons to support our productions. In the past, we have improved our sound/lighting system as well as added an additional heater all thanks to you! **Donations are fully tax deductible**, and all patrons who give \$25 or more will be recognized in the program of each production. Please continue to support us through these trying economic times. Send your tax-deductible donation to: Knock 'em Dead, 1843 East Roanoke, Boise, ID 83712.

Cameo	\$25-\$99 donation
Supporting Role	\$100-\$499 donation Receives a 1-year membership
Leads	\$500-\$749 donation Receives 1 season ticket package
Stars	\$750+ donation Receives membership and 2 season ticket packages

GROUP SALES

Dinner & Show on Friday or Saturday. A group rate of \$33.50 per person for a group of 25 or more people is available to create a wonderful gathering of friends or coworkers. No need to call the box office. Tickets are available on-line at www.KEDproductions.org

Thursday Night Shows. A group rate of \$10.00 per person for a group of 25 or more is made available to create a wonderful gathering of students, friends or coworkers. After the production, tours can be given as well as meeting the performers, director and technicians. A great learning experience that students will never forget!

Student Rush Tickets. With a ticket price of \$10.00 on ALL performance nights; we are attempting to make theatre available to all young people.

Reserve the entire theatre during one of our performances for your group. Please contact us for pricing information.

We can handle all your arrangements so that your group will have an enjoyable evening with minimum effort on your part. We are a non-profit theatre that utilizes the best of local high school, college and community talent to present some of the finest entertainment available anywhere in the Treasure Valley.

The theatre is located at 333 South 9th Street in the heart of Boise's new Entertainment District. In our 160-seat facility we serve a complete dinner as well as a wide range of beverages to meet everyone's tastes. We offer a variety of soda, bottled water, non-alcoholic beer, Heineken and Fat Tire beers, Blush, Chardonnay, and Merlot as well as Champagne.

On Fridays and Saturdays our seating begins at 6:30 PM with dinner starting shortly after. Curtain is 8 PM, and dessert and coffee are served during intermission. We perform a non-dinner production on Thursdays with a curtain time of 7 PM (seating begins around 6:30 PM).

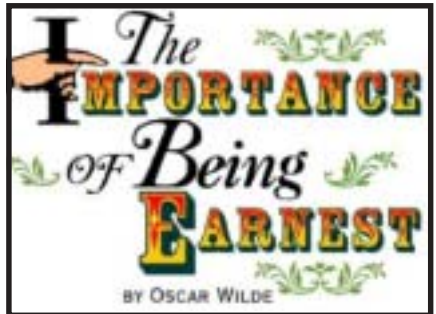
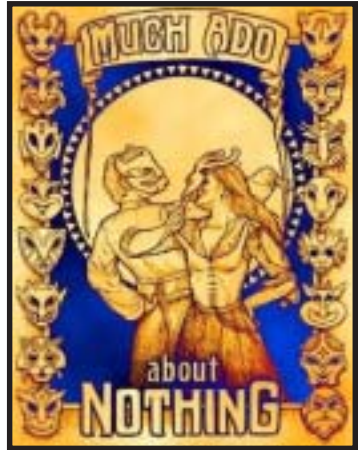
We look forward to taking care of your group needs as well as offering you a grand night of entertainment. See you at the theatre!

FREE PARKING BEHIND THE THEATRE.

HANDICAP ACCESS IN FRONT.

WWW.KEDPRODUCTIONS.ORG

Knock 'em Dead Dinner Theatre



2008-2009 Season
333 South 9th Boise ID